



# 38B Blakelaw Road

Alwick, NE66 1BA

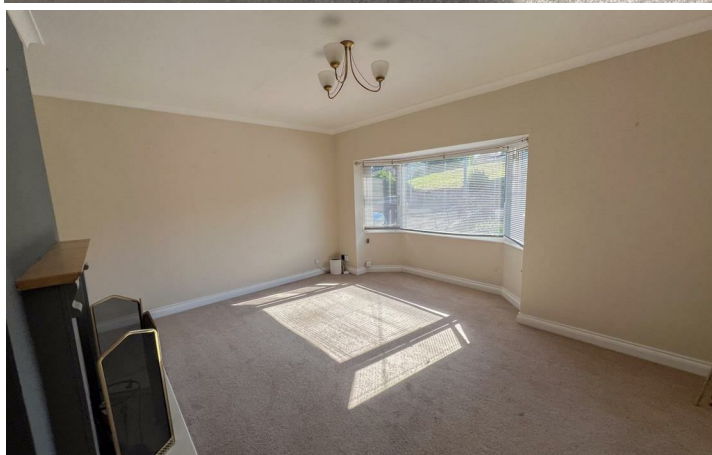
**£750 Per Month**

An excellent opportunity to rent this immaculate two bedroom first floor apartment. which is located in a popular residential area with fine open views to the rear. The property is available for immediate occupation. The well maintained interior comprises of a large living room with an attractive open coal fireplace, a well equipped modern kitchen with appliances, two double bedrooms and a bathroom. The apartment has full double glazing and gas central heating.

Garden at the front and rear of the property and a driveway offering parking and giving access to the garage.

EPC rate -C.

Council tax band- A.







Important Information You may download, store and use the material for your own personal use and research. You may not republish, retransmit, redistribute or otherwise make the material available to any party or make the same available on any website, online service or bulletin board of your own or of any other party or make the same available in hard copy or in any other media without the website owner's express prior written consent. The website owner's copyright must remain on all reproductions of material taken from this website.

**Berwick Office**  
36 Hide Hill, Berwick-upon-Tweed  
Northumberland, TD15 1AB

T: (01289) 307571  
F: (01289) 302948  
E: [berwick@aitchisons.co](mailto:berwick@aitchisons.co)

**Wooler Office**  
25 High Street, Wooler  
Northumberland, NE71 6BU

T: (01668) 281819  
F: (01668) 281717  
E: [wooler@aitchisons.co](mailto:wooler@aitchisons.co)



**Zoopla.co.uk**

